



MINERAL

COLLECTION COBALT



Manufacturing process Tufting 1/10" looppile	Méthode de fabrication Tuftée 1/10" poil bouclé	Herstellungsverfahren Getuftet 1/10" Schlingenpol	Fabricatiemethode Getuft 1/10" lussenpool
Pile content 100% PP Stainsafe®	Composition du velours 100% PP Stainsafe®	Polmaterial 100% PP Fleckweg®	Pool Samenstelling 100% PP Stainsafe®
Pile weight Ca. 550 g/m ²	Poids du velours Ca. 550 g/m ²	Polgewicht Ca. 550 g/m ²	Poolgewicht Ca. 550 g/m ²
Total weight Ca. 4.300 g/m ²	Poids totale Ca. 4.300 g/m ²	Gesamtgewicht Ca. 4.300 g/m ²	Totaal gewicht Ca. 4.300 g/m ²
Pile height Ca. 4 mm	Hauteur du velours Ca. 4 mm	Florhöhe Ca. 4 mm	Poolhoogte Ca. 4 mm
Total height Ca. 7 mm	Hauteur totale Ca. 7 mm	Gesamthöhe Ca. 7 mm	Totale hoogte Ca. 7 mm
Tuft density Ca. 212.760/m ²	Nombre de touffes Ca. 212.760/m ²	Noppenzahl Ca. 212.760/m ²	Aantal noppen Ca. 212.760/m ²
Size 50 x 50 cm	Dimensions 50 x 50 cm	Abmessung 50 x 50 cm	Afmetingen 50 x 50 cm
Packaging 5 m ²	Emballage 5 m ²	Verpackung 5 m ²	Verpakking 5 m ²
Antistatique < 2 kV	Antistatique < 2 kV	Antistatisch < 2 kV	Antistatisch < 2 kV
Fire class C _{fl} -s1 (EN 13501-1) Centexbel 0493-CPR-0130	Classement feu C _{fl} -s1 (EN 13501-1) Centexbel 0493-CPR-0130	Brandverhaltensklasse C _{fl} -s1 (EN 13501-1) Centexbel 0493-CPR-0130	Brandklasse C _{fl} -s1 (EN 13501-1) Centexbel 0493-CPR-0130
Sound insulation 22 dB	Isolation aux bruits d'impact 22 dB	Trittschalldämmung 22 dB	Geluidsisolatie 22 dB
Fastness to light 5-6	Solidité à la lumière 5-6	Lichtechtheit 5-6	Lichtechtheid 5-6
Water fastness 4-5	Solidité à l'eau 4-5	Wasserechtheit 4-5	Waterrechtheid 4-5

COBALT	185	685	945	965
Min. 2.500m²	✓	✓	✓	✓

EN 14041

16

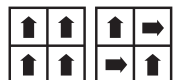
Balta Industries - Wakkensteenweg 2
BE - 8710 Sint-Baafs-Vijve

DOP: 1010#BIOACL

Textile Floor Covering EN 1307
Notified body 0493

www.baltamediabank.com

REC 49D7E8F0
www.pro-dis.info



MAINTENANCE: Spillage should be taken up promptly and surface stains removed by an appropriate method as soon as possible. In heavy traffic areas the carpet should be cleaned daily with a vacuum cleaner. Periodic maintenance should be carried out by professional cleaning staff using appropriate extraction systems. COLOUR MARCHING: As with all textile products there will be a variance in shade from batch to batch. Any samples supplied are as close a representation to the actual carpet as the production process will allow. An exact colour match between different dye batches cannot be guaranteed.



MINERAL

COLLECTION COBALT

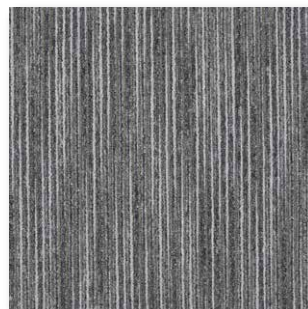
L C T[®] FIRST
Luxury Carpet Tiles



▲ 685



▲ 185



▲ 965



▲ 945